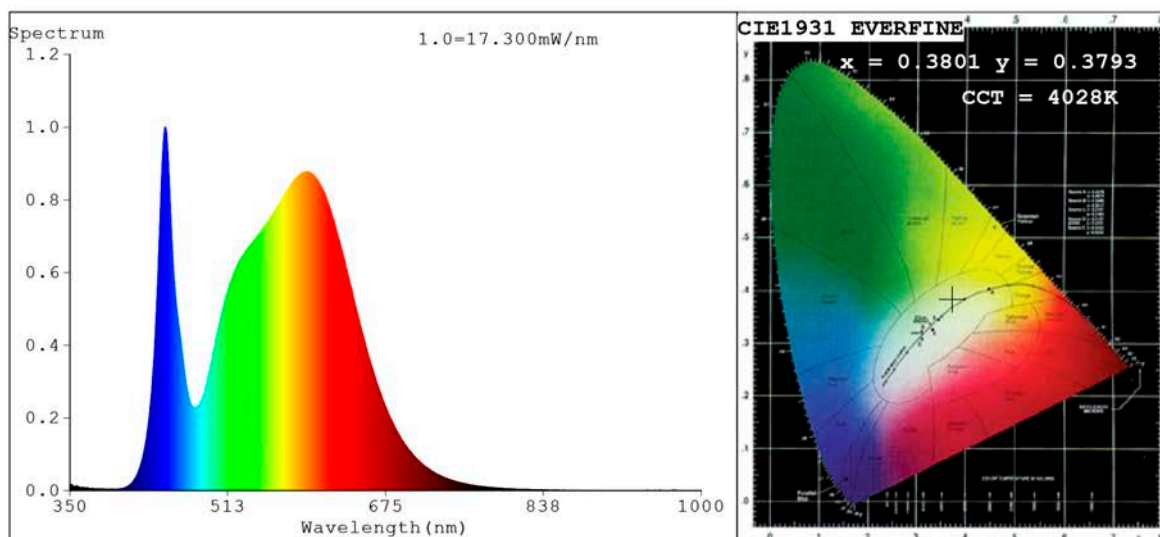


Spectrum Test Report



Color Parameters:

Chromaticity Coordinate: $x=0.3801$ $y=0.3793$ $u'=0.2238$ $v'=0.5026$
 CCT=4028K (Duv=0.0013) Dominant WL:Ld =578.3nm Purity=27.9%
 Ratio:R=18.0% G=78.6% B=3.3%; Peak WL:Lp=447.8nm FWHM=21.1nm
 Render Index:Ra=81.9 CRI=74.9 TM30:Rf=81 Rg=96
 R1 =80 R2 =87 R3 =93 R4 =82 R5 =80 R6 =82 R7 =86
 R8 =65 R9 =6 R10=69 R11=81 R12=60 R13=82 R14=96 R15=74

Photo Parameters:

Flux = 886.0 lm Eff. : 83.67 lm/W Fe = 2.674 W Scotopic:1473.3 S/P:1.6628

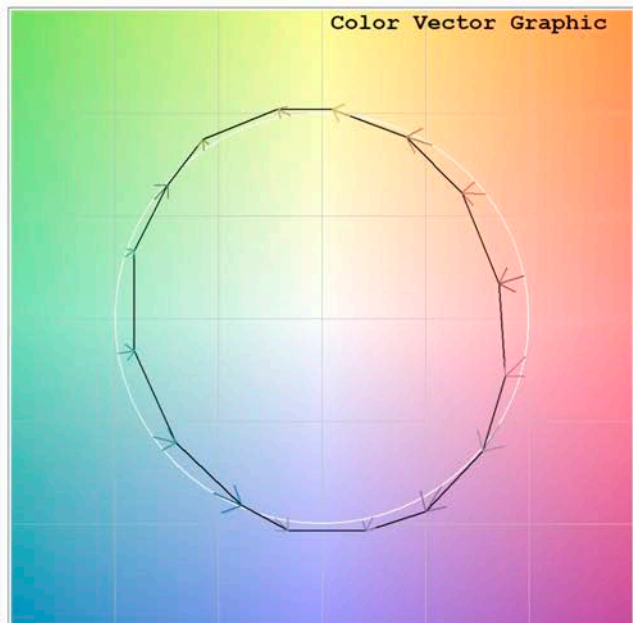
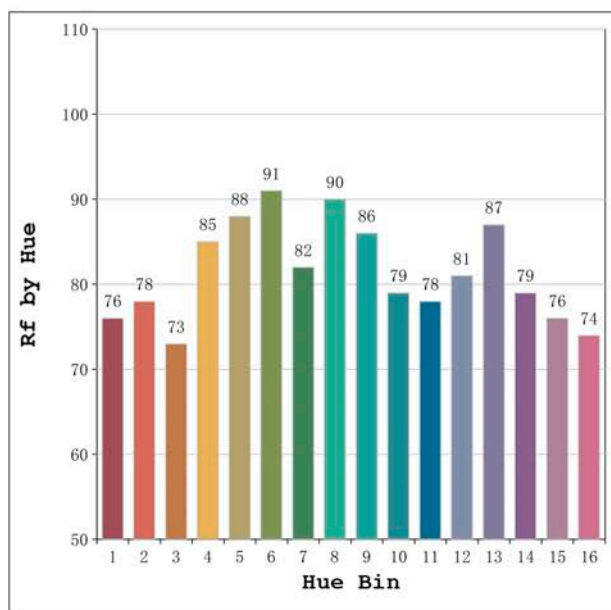
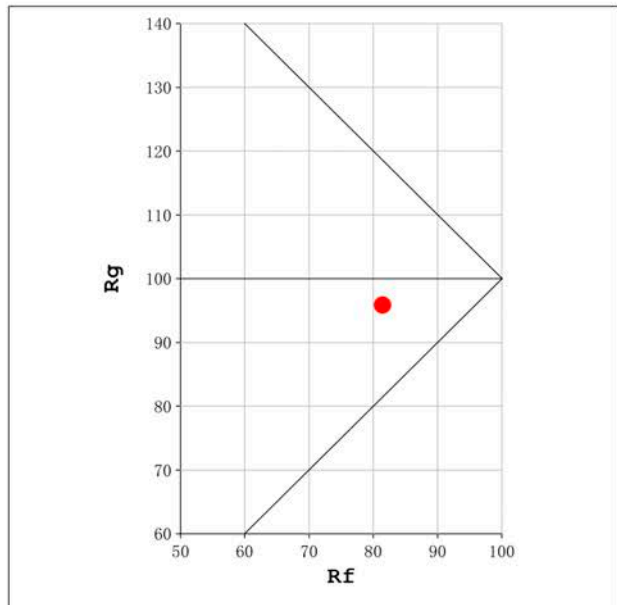
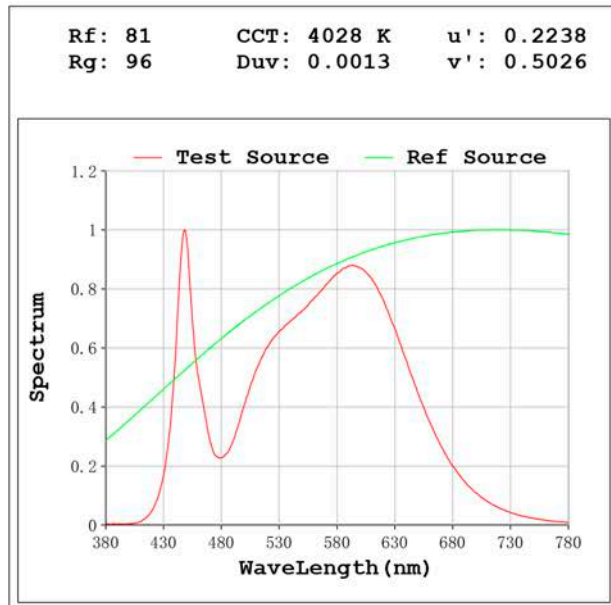
Electrical parameters:

V = 11.998 V I = 0.8826 A P = 10.59 W PF = 1.000

Status: Integral T = 1678 ms Ip = 47885 (73%)

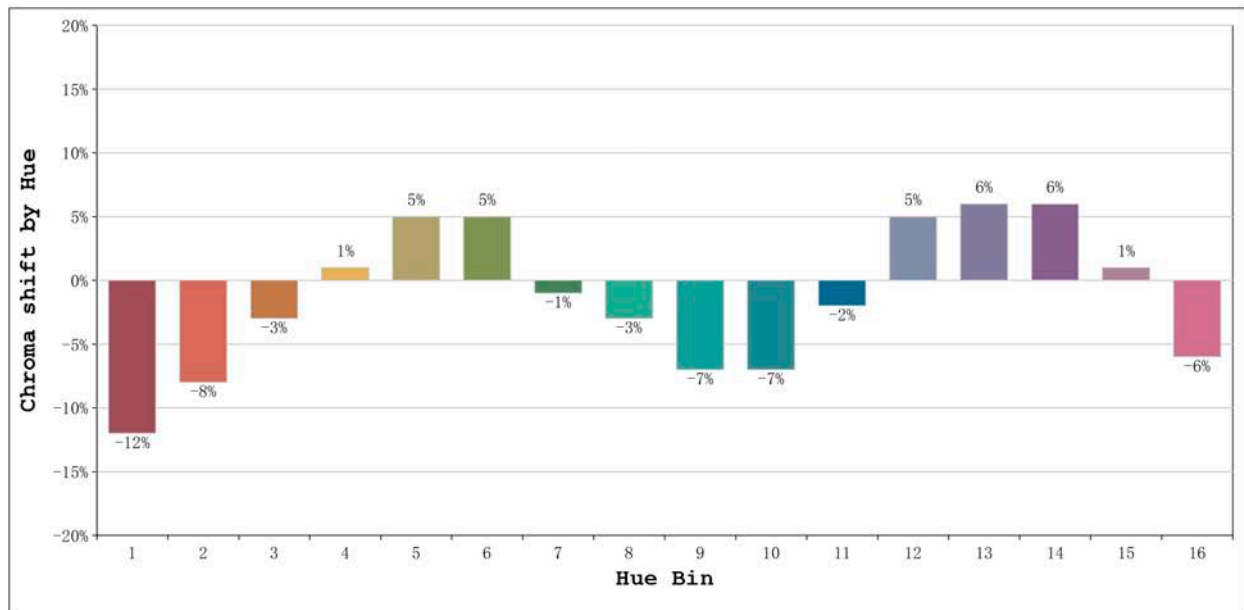
Model:Ecoled Getafe 4000K
 Tester:Sergio Carneros
 Temperature:21Deg
 Manufacturer:Luz Negra S.L

Number: 32.015
 Date:25-5-2021
 Humidity:57%
 Remarks:100cm de tira flexible



Model:Ecoled Getafe 4000K
 Tester:Sergio Carneros
 Temperature:21Deg
 Manufacturer:Luz Negra S.L

Number: 32.015
 Date:25-5-2021
 Humidity:57%
 Remarks:100cm de tira flexible



Hue Bin	Hue Angle	Rf	Graphic shift(%)	
			Chroma	Hue
1	0.0° - 22.5°	76	-12	-1
2	22.5° - 45.0°	78	-8	7
3	45.0° - 67.5°	73	-3	12
4	67.5° - 90.0°	85	1	9
5	90.0° - 112.5°	88	5	5
6	112.5° - 135.0°	91	5	-2
7	135.0° - 157.5°	82	-1	-8
8	157.5° - 180.0°	90	-3	-3
9	180.0° - 202.5°	86	-7	0
10	202.5° - 225.0°	79	-7	8
11	225.0° - 247.5°	78	-2	15
12	247.5° - 270.0°	81	5	8
13	270.0° - 292.5°	87	6	-3
14	292.5° - 315.0°	79	6	-12
15	315.0° - 337.5°	76	1	-14
16	337.5° - 360.0°	74	-6	-10

Model:Ecoled Getafe 4000K
Tester:Sergio Carneros
Temperature:21Deg
Manufacturer:Luz Negra S.L

Number: 32.015
Date:25-5-2021
Humidity:57%
Remarks:100cm de tira flexible